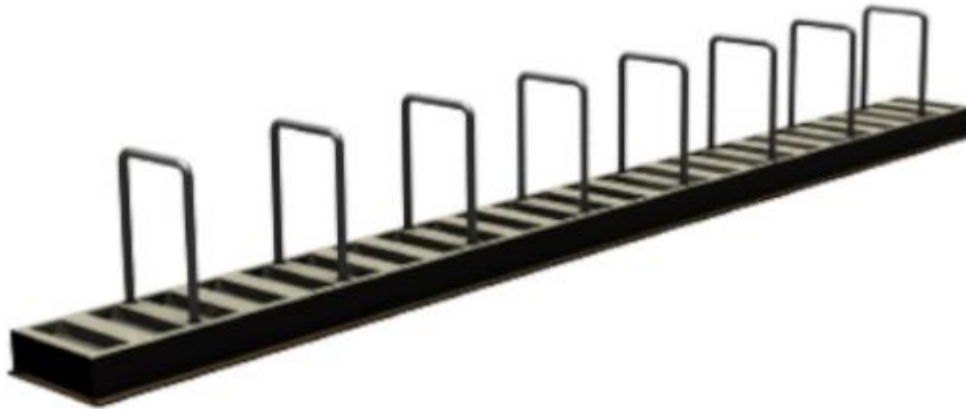


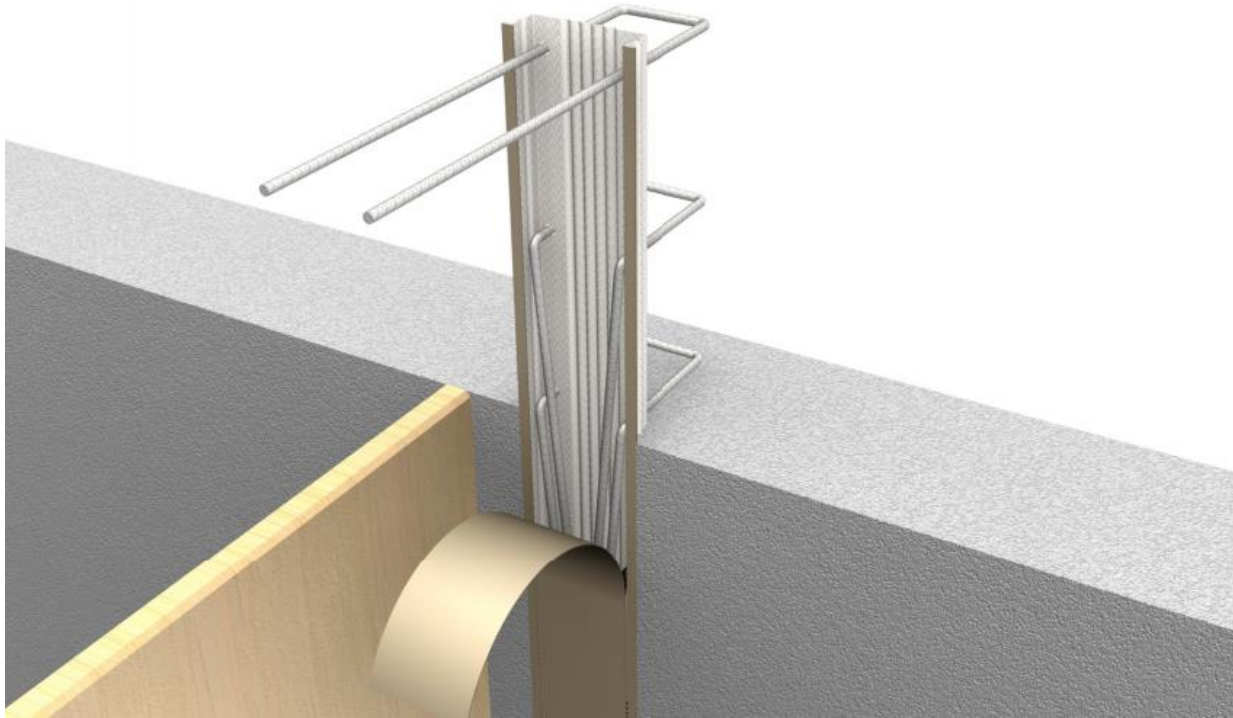
## COMMERCIAL DOCUMENTATION



## TERWA STARTER BOX | **TYPE TP**



## GENERAL INFORMATION



### PRODUCT DESCRIPTION

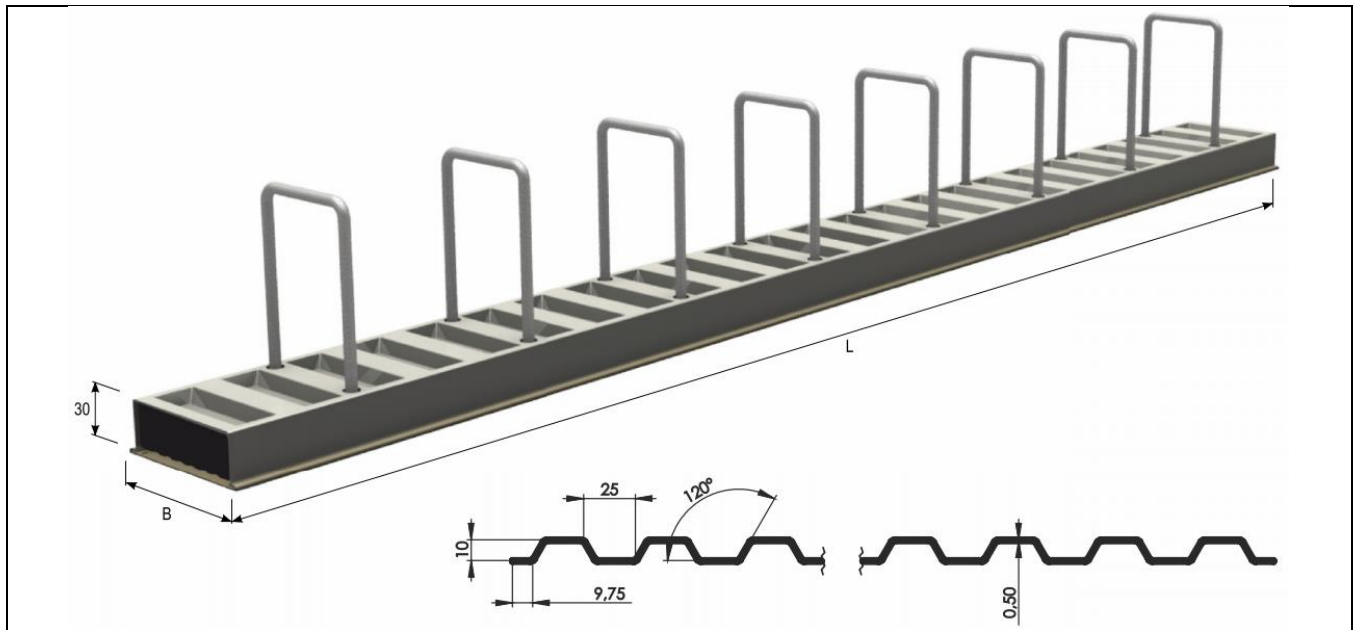
TERWA starter boxes are composed of the longitudinal steel profiles (rails) made by perforated, galvanized steel plate. Ribbed reinforcing bars are embedded in the profiles. Reinforcing bars from one side of the profile form anchoring loops, and from the other side- are bent to it and covered by the thick plastic tape. Concrete reinforcement bended starter boxes are used to perform vertical and horizontal connections of the elements of reinforced concrete constructions, concreted in stages and the precast elements with monolithic. Use of connecting set TERWA ensures fulfilment all requirements specified by standards for proper form of contact anastomosis. Standards for design concrete constructions assume that with the correct shape of the joint we can treat the construction element as homogeneous and permanently compound.

### USE

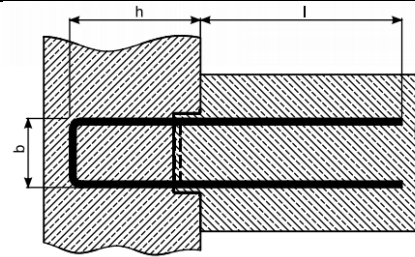
Reinforcement bended Starter Boxes allow execution of connection reinforced concrete structural elements, concreted in various stages of construction, i.e. in connection of the walls, floors to walls, staircase landings, balconies, consoles etc. It allows significantly reduce the duration of the investment and reducing the period of lease elements of formwork system.

### ADVANTAGES

- Simplified execution of constructing joins and additional concreting
- Easy and fast assembly - the component is attached to the formwork by nails
- Specially contoured shape of the perforated rail provides proper preparation of the contact surface on the connection of the two elements, implemented at different time
- Thanks to deliberately roughened joint with optimally shaped furrow (notch) entirely transfer shearing forces occurring in the connector
- It allows for continuity of reinforcement and required length of anchoring bars in elements of reinforcement concrete
- The shape of the rail guarantees the correct depth of concrete coverage of the reinforcing bars
- The rail is made from galvanized steel plate, what protects it by aggressive influence of environment at the storage stage and during realization
- The shape and construction of the rail provides stability during concreting and protect by permeation of the concrete inside the profile
- Thick plastic tape ensures durable protection of reinforcement bars at the time of installation the rail to the formwork. Perforation cut in the rail allows for its quick removal and commencement of reinforce works
- Possibility of matching to the different shapes of formwork (i.e. arch formworks)
- It can be adapted to different systems of reinforcement in elements of reinforced concrete-non-standard elements, on inquiry
- Reinforcement bended Starter Boxes have technical approval which can be asked for at TERWA Construction Group

**TERWA STARTER BOX – TYPE TP**


- Standard rail length L=1,25 M
- Cross-profiled sheet steel for optimum force transmission



Symbol	Rail width B [mm]	Bar diameter $\phi$ [mm]	Bar spacing E [cm]	h [cm]	b [cm]	l [cm]	Measurement Unit	Packaging [pcs/palette]	Art. No.
<b>TSB – type TP</b>									
TSB type TP 110-10/15	110	10	15	15	9	39	mb	80pcs.=100m	64789
TSB type TP 110-10/20	110	10	20	15	9	39	mb	80	64790
TSB type TP 140-10/15	140	10	15	15	12	39	mb	108pcs.=135m	64791
TSB type TP 140-10/20	140	10	20	15	12	39	mb	108	64792
TSB type TP 140-12/15	140	12	15	15	12	46	mb	108	64793
TSB type TP 140-12/20	140	12	20	15	12	46	mb	108	64794
TSB type TP 160-10/15	160	10	15	15	14	39	mb	84pcs.=105m	64795
TSB type TP 160-10/20	160	10	20	15	14	39	mb	84	64796
TSB type TP 160-12/15	160	12	15	15	14	46	mb	84	64797
TSB type TP 160-12/20	160	12	20	15	14	46	mb	84	64798
TSB type TP 190-10/15	190	10	15	15	17	39	mb	72pcs.=90m	64799
TSB type TP 190-10/20	190	10	20	15	17	39	mb	72	64800
TSB type TP 190-12/15	190	12	15	15	17	46	mb	72	64801
TSB type TP 190-12/20	190	12	20	15	17	46	mb	72	64802

## CONTACT



TERWA is the global supplier for precast and construction solutions with multiple offices around the world. With all our staff, partners and agents, we are happy to provide all construction and precast companies who work in the building industry with full service and 100% support.

### TERWA CONSTRUCTION GROUP

#### Terwa Construction Netherlands (HQ)

**Global Sales & Distribution**  
 Kamerlingh Onneslaan 1-3  
 3401 MZ IJsselstein  
 The Netherlands  
**T** +31-(0)30 699 13 29  
**F** +31-(0)30 220 10 77  
**E** [info@terwa.com](mailto:info@terwa.com)

#### Terwa Construction Central East Europe

**Sales & Distribution**  
 Strada Sânzieni  
 507075 Ghimbav  
 Romania  
**T** +40 372 611 576  
**E** [info@terwa.com](mailto:info@terwa.com)

#### Terwa Construction Poland

**Sales & Distribution**  
 Ul. Cicha 5 lok. 4  
 00-353 Warszawa  
 Poland  
**E** [info@terwa.com](mailto:info@terwa.com)

#### Terwa Construction India & Middle East

**Sales & Distribution**  
 India  
**T** +91 89 687 000 41  
**E** [info@terwa.com](mailto:info@terwa.com)

#### Terwa Construction China

**Sales & distribution**  
 5F 504, No. 101 Chuanchang road  
 PRC, 200032, Shanghai  
 China  
**E** [info@terwa.com](mailto:info@terwa.com)

**ALL SPECIFICATIONS CAN BE CHANGED WITHOUT PREVIOUS NOTICE.**

### DISCLAIMER

Terwa B.V. is not liable for deviations due to wear of the products it has delivered. Neither is Terwa B.V. liable for damage due to inaccurate and/or improper handling and use of the products it has delivered and/or use of same for purposes other than those intended.

Terwa B.V.'s responsibility is furthermore limited in accordance with article 13 of the "Metaalunie" conditions, which are applicable for all Terwa B.V. deliveries. The user is responsible for ensuring compliance with all applicable copyright laws. Without limiting the rights under copyright, no part of this documentation may be reproduced, stored in or introduced into a retrieval system, or transmitted in any form or by any means (electronic, mechanical, photocopying, recording, or otherwise), or for any purpose, without the express written permission of Terwa B.V.